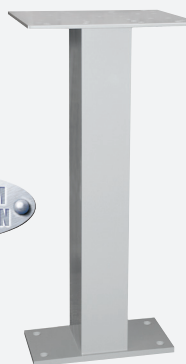


# Postal Specialties

## UNIVERSAL PEDESTALS

Made entirely of aluminum, Salsbury universal pedestals feature a durable powder coated aluminum finish and can be used as a replacement pedestal for the Neighborhood Delivery and Collection Box Unit (NDCBU) and many other applications. Pedestal mounting kits are available - see below.

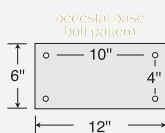
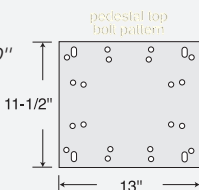
ALL ALUMINUM CONSTRUCTION



3285

### 3285 - Universal Pedestal

- 4" W x 28-1/2" H x 5-1/2" D"
- top: 13" W x 11-1/2" D
- base: 12" W x 6" D
- 20 lbs.
- \$150.00



## LABEL HOLDERS

Made of heavy duty plastic, transparent self-adhesive label holders neatly organize and identify mailbox compartments. White cardboard inserts are included.

BOX 123

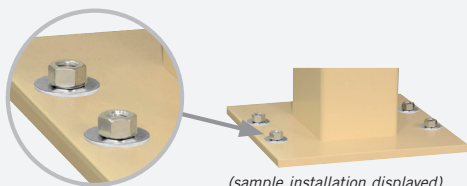
### 1070 - Label Holders

- 3" W x 3/8" H
- bag of (50)
- \$30.00

1070

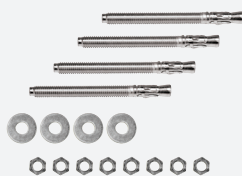
## PEDESTAL MOUNTING KITS

Made of heavy duty zinc plated steel, Salsbury pedestal mounting kits are ideal for pedestal mounted installations. Each pedestal mounting kit includes four expansion wedge anchor bolts (#3393) or four anchor (J) bolts (#3394) as well as washers and nuts. The pedestal mounting kits can be used with all Salsbury commercial and residential bolt mounted posts and pedestals.



### 3393 - Expansion Wedge Pedestal Mounting Kit

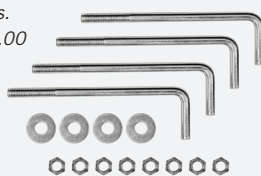
- For existing concrete installations
- (4) 1/2" W X 5-1/2" H wedge anchor bolts
- 2 lbs.
- \$35.00



3393

### 3394 - J-bolt Pedestal Mounting Kit

- For new concrete installations
- (4) 1/2" W X 8" H anchor (J) bolts
- 2 lbs.
- \$35.00



3394

## MAILBOX BANKS

Handcrafted of solid oak, Salsbury mailbox banks include a 3-1/2" W x 5" H brass door, a lock with two (2) keys, a clear 1/4" thick glass window and a name plate.

### 1030 - Mailbox Bank

- 5-3/4" W x 6-1/2" H x 5" D
- 5 lbs.
- \$50.00



1030

## KEY CABINETS

Made of 20 gauge steel, Salsbury key cabinets are ideal for organizing and securing up to (200) keys. Key cabinets feature a full length piano hinge for smooth operation, a durable powder coated beige finish and a lock with two (2) keys.



1010

### 1010 - Key Cabinet

- 13-1/4" W x 30-1/2" H x 1-3/4" D
- 25 lbs.
- \$125.00

## NAME DIRECTORIES

Name directories are available in an aluminum or bronze finish and can accommodate (45) names on 1/4" label tape (not included).



1020

### 1020<sup>1</sup> - Name Directory

- 4" W x 14" H x 1/4" D
- 3 lbs.
- \$60.00

<sup>1</sup>Specify



aluminum



bronze

## KEY KEEPERS USPS or PRIVATE

Made of 20 gauge steel, Salsbury key keepers are available as surface mounted or recessed mounted units and feature a durable powder coated finish. A key keeper allows the U.S.P.S. or other individuals to access a key and deliver the mail and is useful when restricted access to a building or mailroom is required.



1080

### 1080<sup>1,2</sup> - Key Keeper - surface mounted

- 6" W x 3-1/4" H x 2" D
- 2 lbs.
- \$50.00



1090

### 1090<sup>1,2</sup> - Key Keeper - recessed mounted

- 6" W x 3-1/4" H x 2" D
- rough opening:  
5" W x 2-1/2" H x 1-3/4" D
- 2 lbs.
- \$50.00

<sup>1</sup>Specify • aluminum  
• bronze

<sup>2</sup>Specify • For U.S.P.S. access  
• For private access  
(order commercial lock #1095 - \$30.00)