

## eBuy Product Information

### MODULAR LOCK BOXES

#### REAR LOADING

Salsbury modular lock boxes have 1/4" thick extruded aluminum doors with a durable powder coated aluminum finish. Each door includes a cam lock with three (3) keys. The mailbox compartments have open backs and are constructed of aluminum. All units have the same outside dimensions. Modular lock boxes are designed to be installed between rack assemblies. The rack assemblies support five (5) mailbox units to form a column of mailboxes. Order rack assemblies separately.



**2901**  
(7110-01-367-2471)



**2902**  
(7110-01-367-2472)



**2903**  
(7110-01-367-2473)



**2904**  
(7110-01-367-2474)

#### MODULAR LOCK BOXES - REAR LOADING

MODEL	DESCRIPTION	DOOR SIZE	WEIGHT
<b>UNIT SIZE: 23-1/4" W x 12-1/8" H x 15-1/2" D</b>			
2901	12 Compartments	3-1/2" W x 5-1/2" H	35 lbs.
2902	8 Compartments	5-1/2" W x 5-1/2" H	30 lbs.
2903	4 Compartments	10-3/4" W x 5-1/2" H	30 lbs.
2904	2 Compartments	10-3/4" W x 11-1/2" H	45 lbs.

#### MODULAR LOCK BOX ACCESSORIES

MODEL	DESCRIPTION	WEIGHT
7110-17-000-5456	Rack Assembly	18 lbs.
7110-17-000-5457	Rack Assembly Cover	2 lbs.
7110-17-000-5458	Trim - Side (2 Pieces)	5 lbs.
7110-17-000-5459	Trim A - Lower	4 lbs.
7110-17-000-5460	Trim B - Upper	4 lbs.

#### SAMPLE INSTALLATION

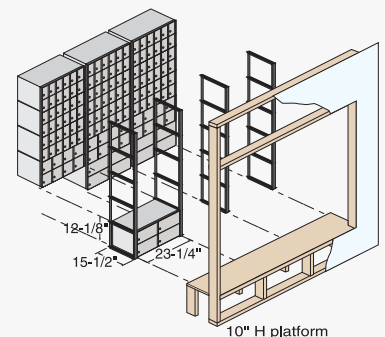
Models displayed:

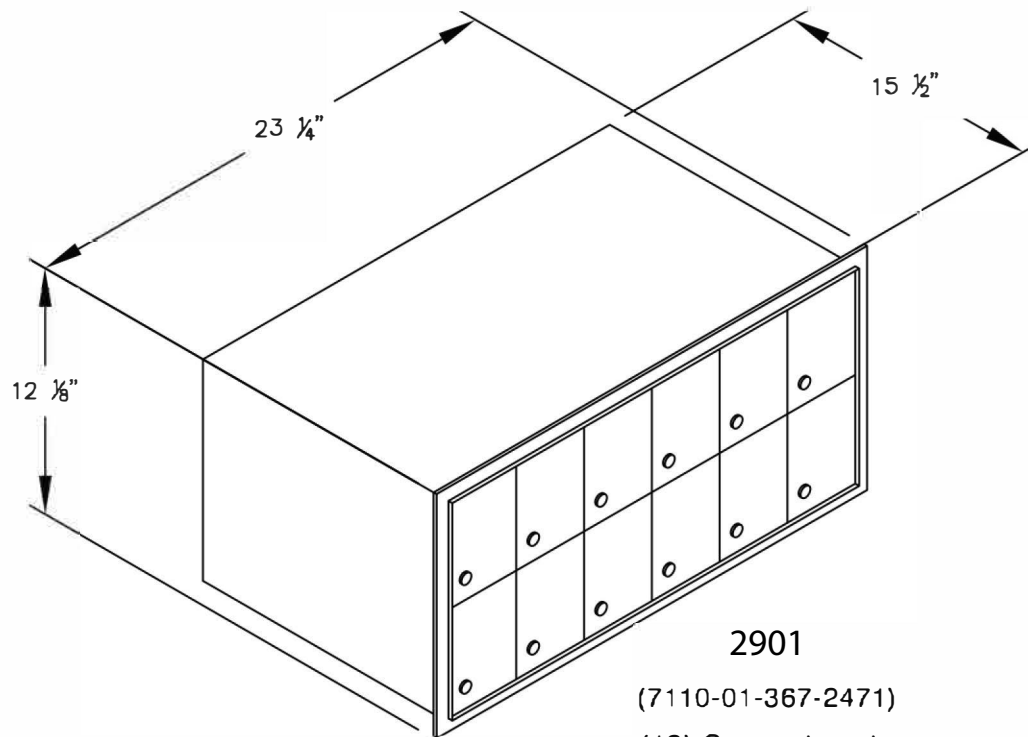
- (9) 2901's
- (3) 2902's
- (3) 2903's
- (4) 7110-17-000-5456's

Units are secured from the rear by brackets (not pictured).

Allow approximately 24" W and 62" H for each mailbox column.

One column of mailbox units requires two (2) rack assemblies and each additional column in the same configuration requires one additional rack assembly.



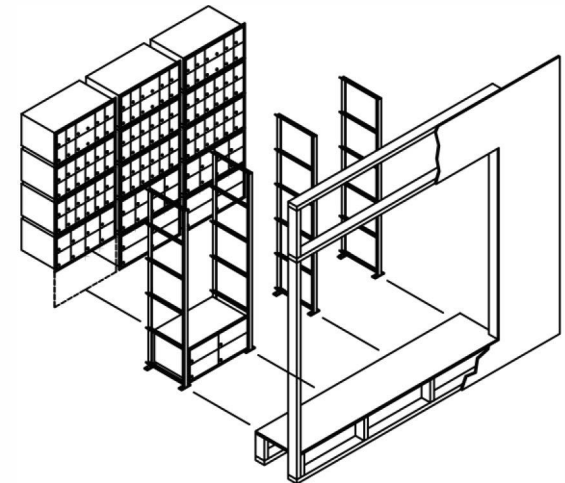


2901

(7110-01-367-2471)

(12) Compartments

TYPICAL INSTALLATION:  
 (See Installation Instructions for more detail)



MODEL#: 2901

(7110-01-367-2471)

MODULAR LOCK BOX

Contract #: 3DVDIE-14-C-0055

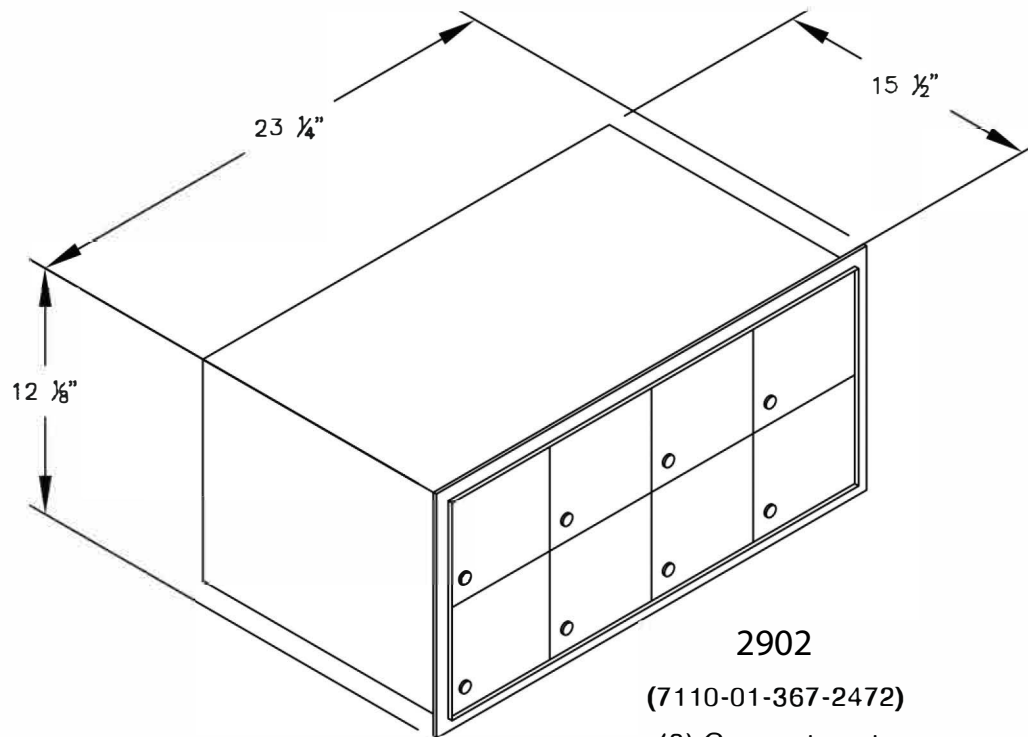
Unit Weight: 35 lbs.

DRAWN: 01 / 2020

***Established in 1936, Salsbury Industries is the industry leader in manufacturing and distributing quality mailboxes.***

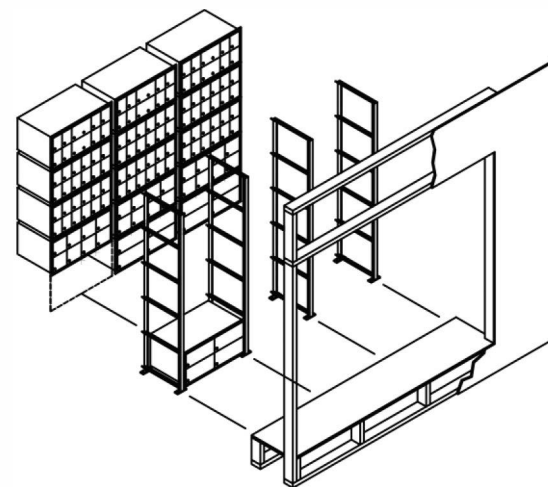


18300 CENTRAL AVENUE  
 CARSON, CA 90746-4008  
 PHONE: (800) 624-5269  
 FAX: (800) 624-5299  
 email: eBuy@mailboxes.com



2902  
 (7110-01-367-2472)  
 (8) Compartments

TYPICAL INSTALLATION:  
 (See Installation Instructions for more detail)



MODEL#: 2902  
 (7110-01-367-2472)

MODULAR LOCK BOX

Contract #: 3DVDIE-14-C-0055

Unit Weight: 30 lbs.

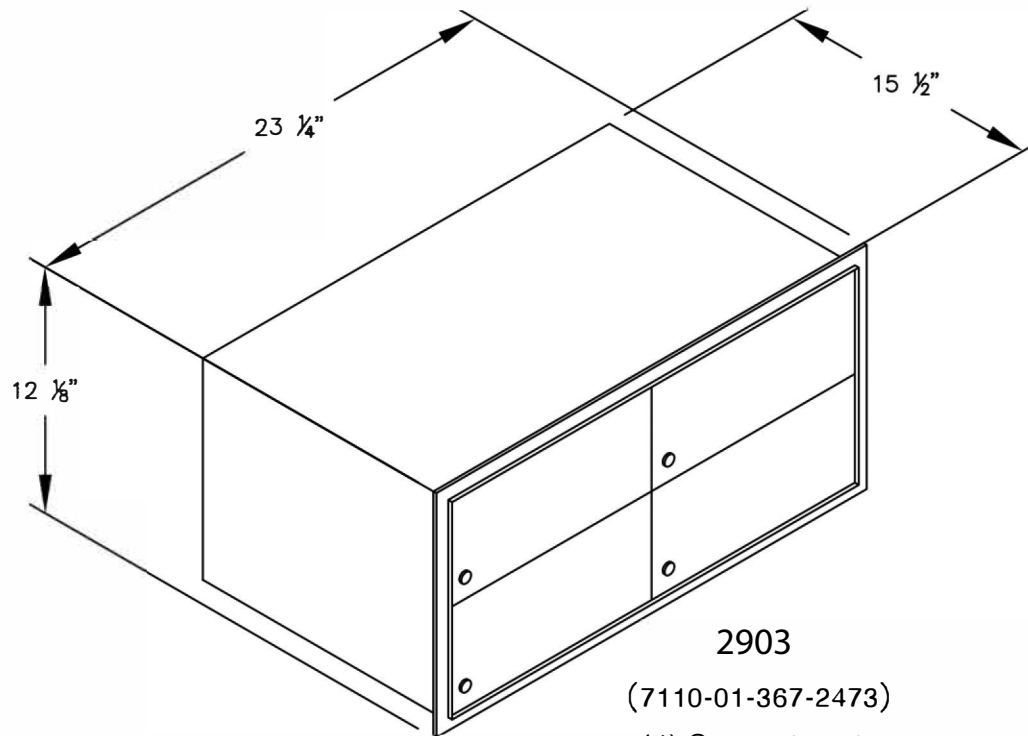
DRAWN: 01 / 2020

***Established in 1936, Salsbury Industries is the industry leader in manufacturing and distributing quality mailboxes.***



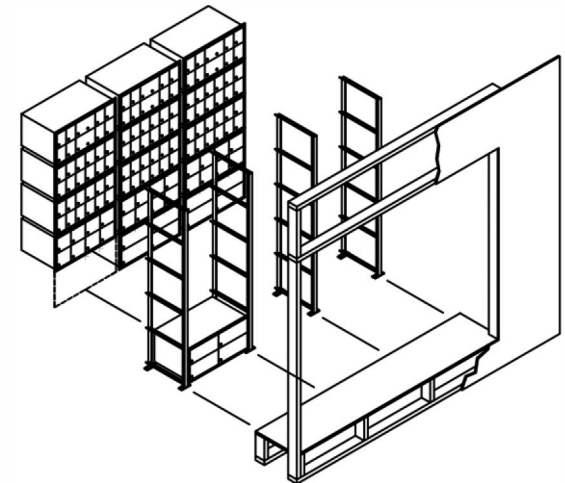
People Committed to Quality Since 1936®

18300 CENTRAL AVENUE  
 CARSON, CA 90746-4008  
 PHONE: (800) 624-5269  
 FAX: (800) 624-5299  
 email: eBuy@mailboxes.com



2903  
 (7110-01-367-2473)  
 (4) Compartments

TYPICAL INSTALLATION:  
 (See Installation Instructions for more detail)



MODEL#: 2903  
 (7110-01-367-2473)  
 MODULAR LOCK BOX  
 Contract #: 3DVDIE-14-C-0055

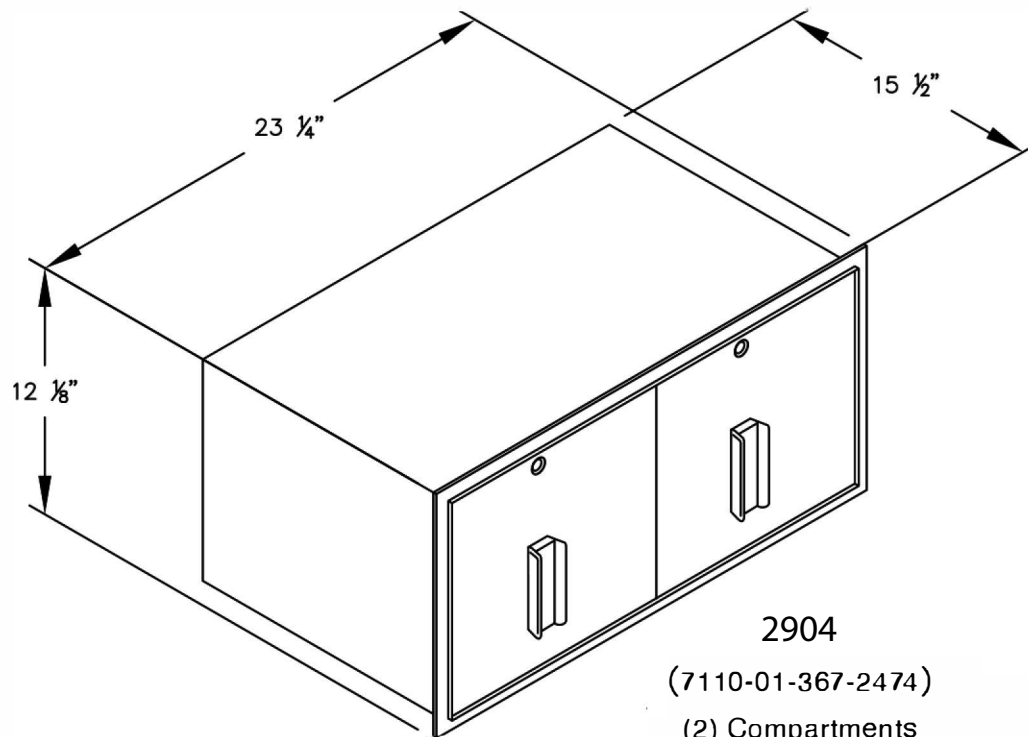
Unit Weight: 30 lbs.

DRAWN: 01 / 2020

***Established in 1936, Salsbury Industries is the industry leader in manufacturing and distributing quality mailboxes.***

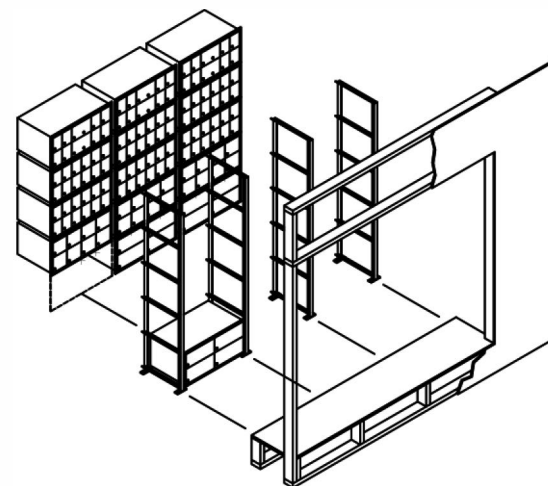
18300 CENTRAL AVENUE  
 CARSON, CA 90746-4008  
 PHONE: (800) 624-5269  
 FAX: (800) 624-5299  
 email: eBuy@mailboxes.com





2904  
 (7110-01-367-2474)  
 (2) Compartments

TYPICAL INSTALLATION:  
 (See Installation Instructions for more detail)



MODEL#: 2904  
 (7110-01-367-2474)

MODULAR LOCK BOX

Contract #: 3DVDIE-14-C-0055

Unit Weight: 45 lbs.

DRAWN: 01 / 2020

***Established in 1936, Salsbury Industries is the industry leader in manufacturing and distributing quality mailboxes.***



People Committed to Quality Since 1936®

18300 CENTRAL AVENUE  
 CARSON, CA 90746-4008  
 PHONE: (800) 624-5269  
 FAX: (800) 624-5299  
 email: eBuy@mailboxes.com