

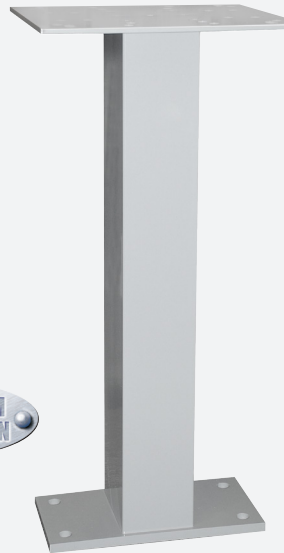
Postal Specialties

UNIVERSAL PEDESTALS

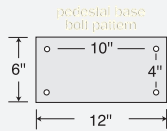
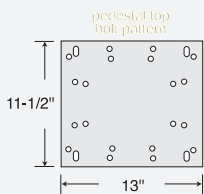
Made entirely of aluminum, Salsbury universal pedestals feature a durable powder coated aluminum finish and can be used as a replacement pedestal for the Neighborhood Delivery and Collection Box Unit (NDCBU) and many other applications. Pedestal mounting kits are available - see below.

3285 - Universal Pedestal

- 4" W x 28-1/2" H x 5-1/2" D"
- top: 13" W x 11-1/2" D
- base: 12" W x 6" D
- 20 lbs.
- \$150.00

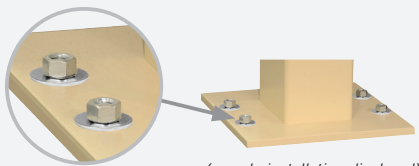


3285



PEDESTAL MOUNTING KITS

Made of heavy duty zinc plated steel, Salsbury pedestal mounting kits are ideal for pedestal mounted installations. Each pedestal mounting kit includes four expansion wedge anchor bolts (#3293, #3393, #3993, #4393, #4793, #4893, #4993, #19993) or four anchor (J) bolts (#3294, #3394, #4394, #4794, #4894, #19994) as well as washers and nuts. The pedestal mounting kits can be used with all Salsbury commercial and residential bolt mounted posts and pedestals.

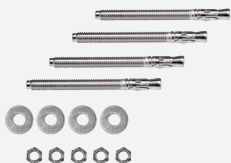


(sample installation displayed)

Expansion Wedge Pedestal Mounting Kit

(3293, 3393, 3993, 4393, 4793, 4893, 4993, 19993)

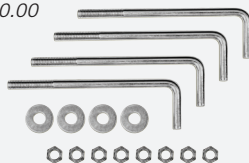
- For existing concrete installations
- (4) 1/2" W X 5-1/2" H wedge anchor bolts
- 2 lbs.
- \$40.00



J-bolt Pedestal Mounting Kit

(3294, 3394, 4394, 4794, 4894, 19994)

- For new concrete installations
- (4) 1/2" W X 8" H anchor (J) bolts
- 2 lbs.
- \$40.00



KEY KEEPERS USPS or PRIVATE

Made of 20 gauge steel, Salsbury key keepers are available as surface mounted or recessed mounted units and feature a durable powder coated finish. A key keeper allows the U.S.P.S. or other individuals to access a key and deliver the mail and is useful when restricted access to a building or mailroom is required.



1080

1080^{1,2} - Key Keeper - surface mounted

- 6" W x 3-1/4" H x 2" D
- 2 lbs.
- \$75.00



1090

1090^{1,2} - Key Keeper - recessed mounted

- 6" W x 3-1/4" H x 2" D
- rough opening:
5" W x 2-1/2" H x 1-3/4" D
- 2 lbs.
- \$75.00

- ¹ Specify
- aluminum
 - bronze

- ² Specify
- For U.S.P.S. access
 - For private access

(order commercial lock #1095 - \$30.00)

LABEL HOLDERS

Made of heavy duty plastic, transparent self-adhesive label holders neatly organize and identify mailbox compartments. White cardboard inserts are included.

BOX 123

1070

1070 - Label Holders

- 3" W x 3/8" H
- bag of (50)
- \$30.00

MAILBOX BANKS

Handcrafted of solid oak, Salsbury mailbox banks include a 3-1/2" W x 5" H brass door, a lock with two (2) keys, a clear 1/4" thick glass window and a name plate.

1030 - Mailbox Bank

- 5-3/4" W x 6-1/2" H x 5" D
- 5 lbs.
- \$50.00



1030

NAME DIRECTORIES

Name directories are available in an aluminum or brass finish and can accommodate (45) names on 1/4" label tape (not included).



1020

1020¹ - Name Directory

- 4" W x 14" H x 1/4" D
- 3 lbs.
- \$60.00

¹ Specify



aluminum



brass