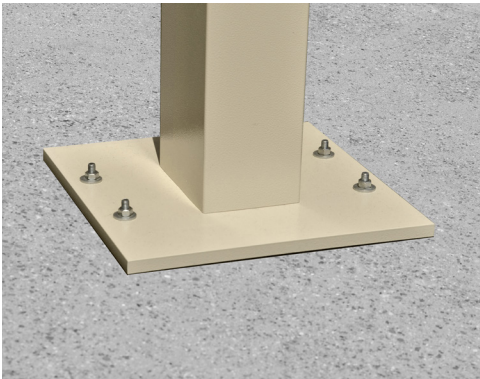
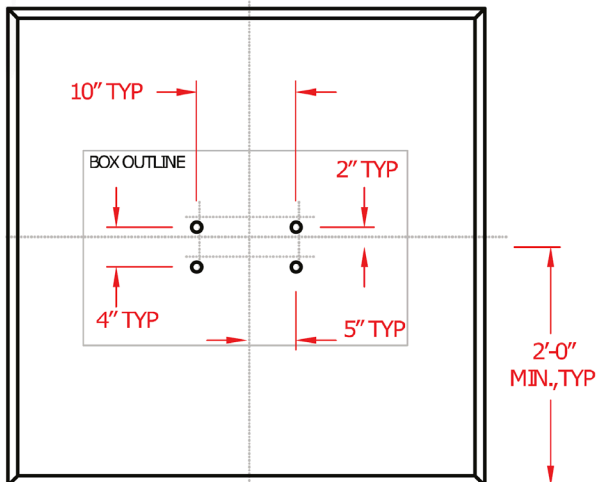


CLUSTER BOX UNITS (CBU's) SITE PREPARATION / PEDESTAL INSTALLATION AND CBU INSTALLATION

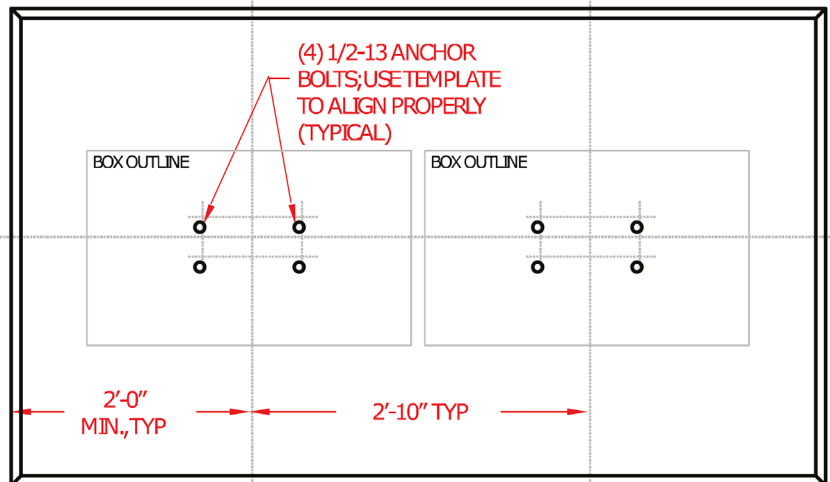
Site Preparation and Pedestal Installation



SINGLE UNIT



MULTI-UNITS



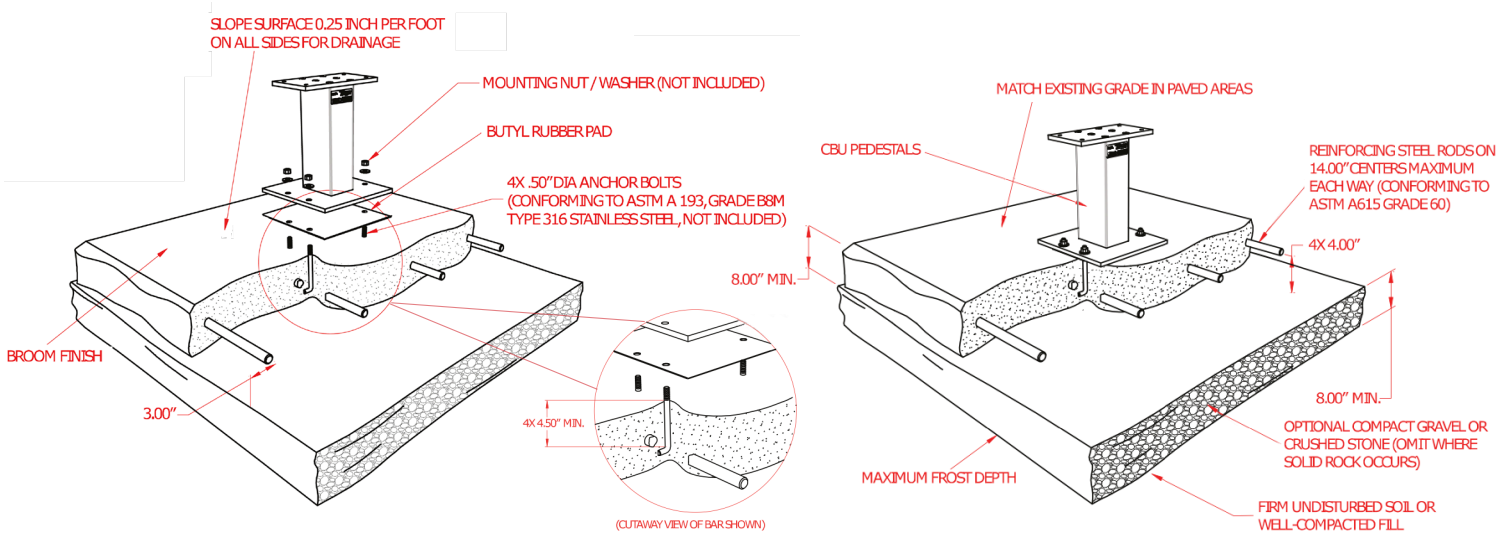
CHAMFER ALL EDGES IN
LANDSCAPE AREAS, TOOL FLUSH
WITH ADJOINING SURFACES IN
PAVED AREAS.

ARRANGE MULTIPLE ANCHOR BOLT SETS AS
REQUIRED; BASE NOT TO EXCEED 16'-0"

SALSBURY INDUSTRIES

18300 Central Avenue, Carson, CA 90746-4008
 Phone: 1-800-624-5269 Int'l Phone: 323-846-6700
 Fax: 1-800-624-5299 Int'l Fax: 323-846-6800
www.mailboxes.com engineering@mailboxes.com

Site Preparation and Pedestal Installation



New Concrete Base:

- 1) Depending on climatic and soil conditions in the area of installation, optional foundation material may be necessary as shown. Consult local building codes for recommendations.
- 2) Refer to Table 1 for thickness (h), width (w), and depth (d) of the concrete pad alternatives.
- 3) Concrete shall have a compressive strength of 3000 psi @ 28 days, contain 4% min ~ 6% max air entrainment and be placed with a 3.50~4.50 slump in accordance to 301.
- 4) Use wire mesh as per (Standard) or for reinforced concrete as per (Standard).

Existing Concrete Base:

- 1) Existing concrete pad must be at least 48" wide.
- 2) Concrete base and anchor bolts may be reused if:
 - existing 1/2" diameter expansion anchor bolts are firmly embedded in the concrete and not damaged or corroded;
 - concrete foundation is not damaged
 - bolt hole pattern of the new unit matches the installed anchor bolts.
- 3) Additional considerations include:
 - if concrete is only 4" thick, then option 'b' in Table 2 below cannot be used
 - any unused, existing anchor bolts must be cut flush to the level of the concrete surface
 - if concrete is damaged, replacement of foundation pad is required

Table 1: Pad Recommendations

4" H	47" W	47" D
5" H	44" W	44" D
6" H	42" W	42" D
7" H	40" W	40" D
8" H	39" W	39" D

Table 2: Expansion Anchor Bolt Recommendations

a. Hilti Bolt II

- 1/2 inch diameter x 5 1/2 inches overall length
- Galvanized
- KB II 12-512, Stainless steel

Minimum embedment in concrete must be at least 3 1/2 inches

b. ITW Ramset Redhead Turbolt

- 1/2 inch diameter x 7 inches overall length
- Galvanized

Minimum embedment in concrete must be at least 4 1/8 inches

c. Rawl Stud

- 1/2 inch diameter x 5 1/2 inches overall length
- Galvanized

Minimum embedment in concrete must be at least 4 inches

SALSBUURY INDUSTRIES

18300 Central Avenue, Carson, CA 90746-4008
 Phone: 1-800-624-5269 Int'l Phone: 323-846-6700
 Fax: 1-800-624-5299 Int'l Fax: 323-846-6800
www.mailboxes.com engineering@mailboxes.com

Installing a Cluster Box Unit (CBU)



Items required for CBU installation (not included)

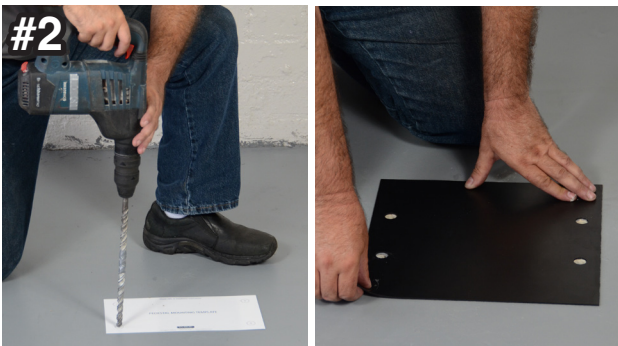
- 5/8" and 9/16" wrench
- Level and hammer
- Hammer drill with 1/2" concrete drill bit
- Four 1/2" diameter 5" long concrete anchors



- Locate the template and gasket. Position the template to the desired location and secure it with adhesive.



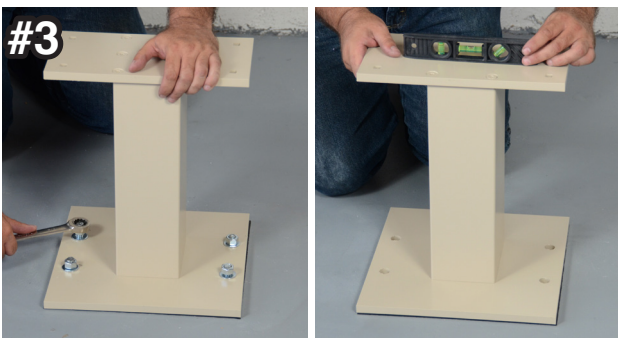
- Mount the CBU unit onto the pedestal, aligning the holes of the CBU with the pedestal. Use assistance



- Drill four 4" deep holes in the concrete using the template.
- Clear all debris and align the gasket holes to the drilled holes.



- Open the master doors and slide out both bottom shelves. Install four bolts from underneath with the 9/16" socket.



- Install the four concrete anchors and tighten all with wrench.
- Check for levelness.



- Install four bolts from underneath with the 9/16" socket. Reinstall the bottom shelves.

SALSBURY INDUSTRIES

18300 Central Avenue, Carson, CA 90746-4008
 Phone: 1-800-624-5269 Int'l Phone: 323-846-6700
 Fax: 1-800-624-5299 Int'l Fax: 323-846-6800
www.mailboxes.com engineering@mailboxes.com